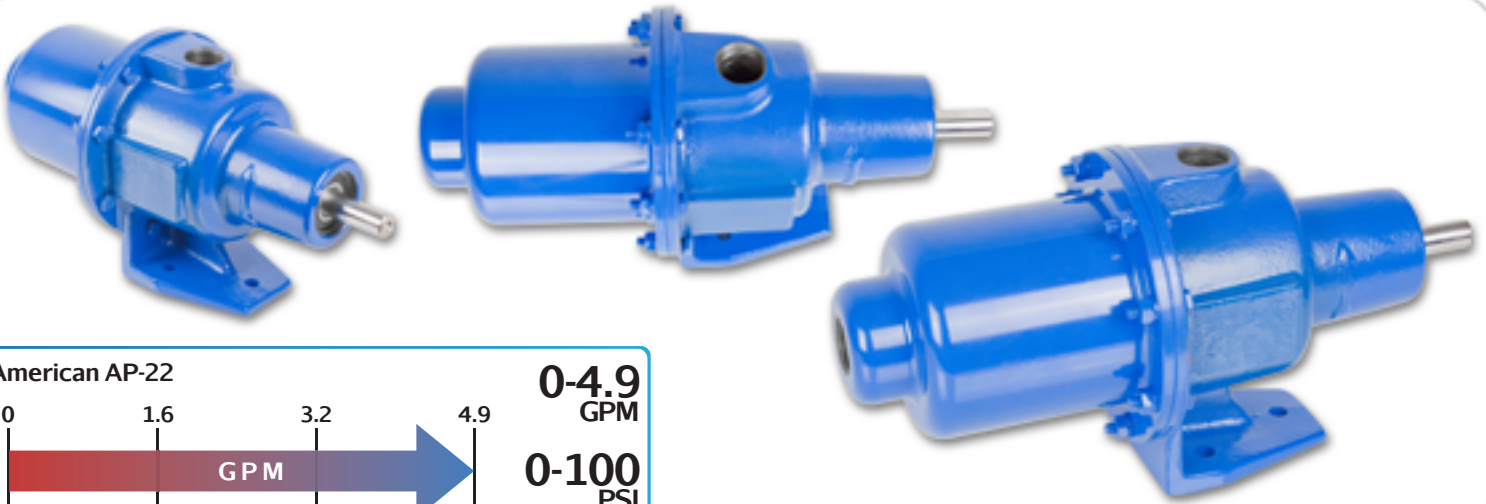


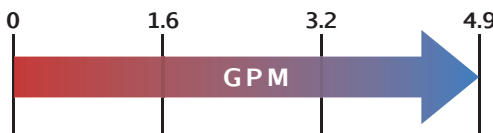


AMERICAN SERIES - AP-22

Wobble Stator Progressive Cavity Pump



American AP-22



0-4.9
GPM

0-100
PSI

Features

- Low Cost
- Low Shear
- Solids Handling
- Compact Design
- Direct Motor Speeds
- Gear Reduction Options

Materials

Rotor: *Stainless Steel Chrome-Plated*

Stator: *Buna, Viton™, EPDM*

Motor: *1/2, 3/4, 1, 1.5, and 2 hp*

Inlet: *3/4"*

Outlet: *3/4"*

Bases: *Steel or Stainless Steel*

Pump Description

The American AP Progressive Cavity Wobble Stator Pump Series from Liberty Process Equipment offers the best value available on the pump market for a progressive cavity pump for flows up to 53 GPM and pressures up to 150 psi. The simple design of the wobble stator and just one universal joint give you the inherent advantages of a progressive cavity pump of low pulsation and shear, solids handling and viscous liquids at an affordable price.

The Long-Coupled and Close-Coupled Version is available in either Cast Iron or 316 Stainless Steel with standard Buna Nitrile Stator with options in Viton and EPDM and Stainless Internals with a hard-chrome plated rotor for long service life. In addition, the pump is available with a standard mechanical seal or can be upgraded to a hard-face mechanical seal for abrasion resistance. We also offer optional Gland Packing.

The American Pump Series is offered in a Long-Coupled design for mounting on a baseplate with a standard motor. All pumps are offered "off the shelf" from our inventory for immediate shipment.

Curves

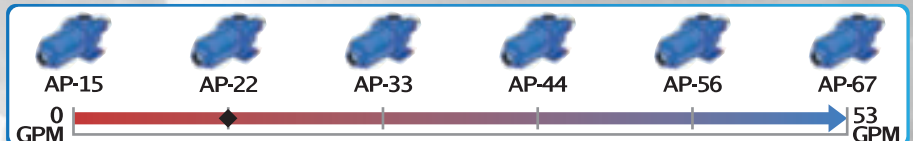
[Click Links Below](#)

AP-22

Drawings

[Click Links Below](#)

AP-22



P: 847.640.7867 F: 847.640.7855
2525 Clearbrook Drive Arlington Heights, IL 60005

www.libertyprocess.com



AMERICAN SERIES - AP22

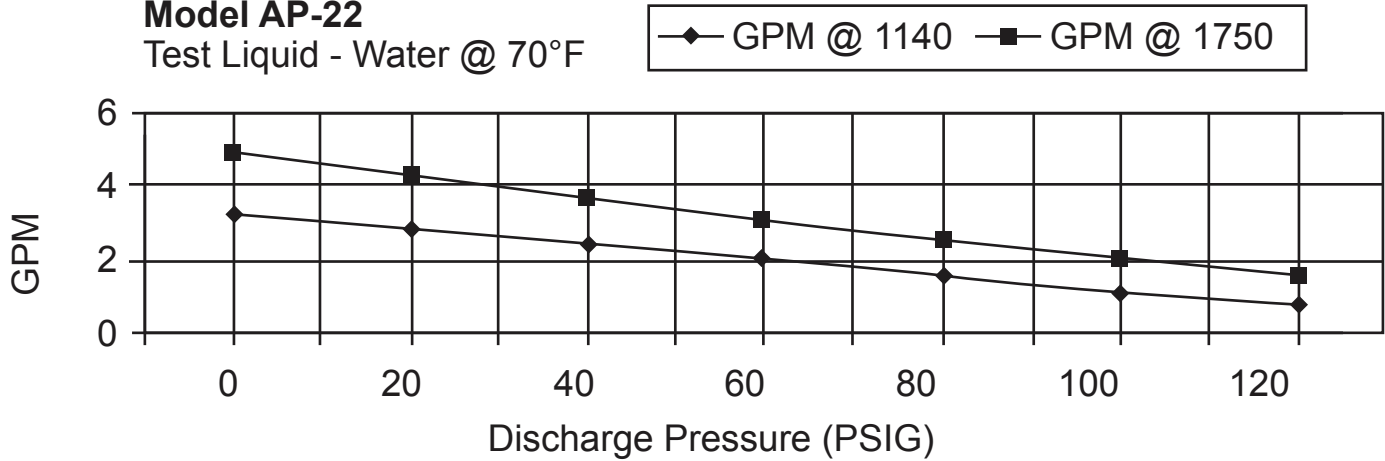
Progressive Cavity Pump

Performance Curves

FLOW

Model AP-22

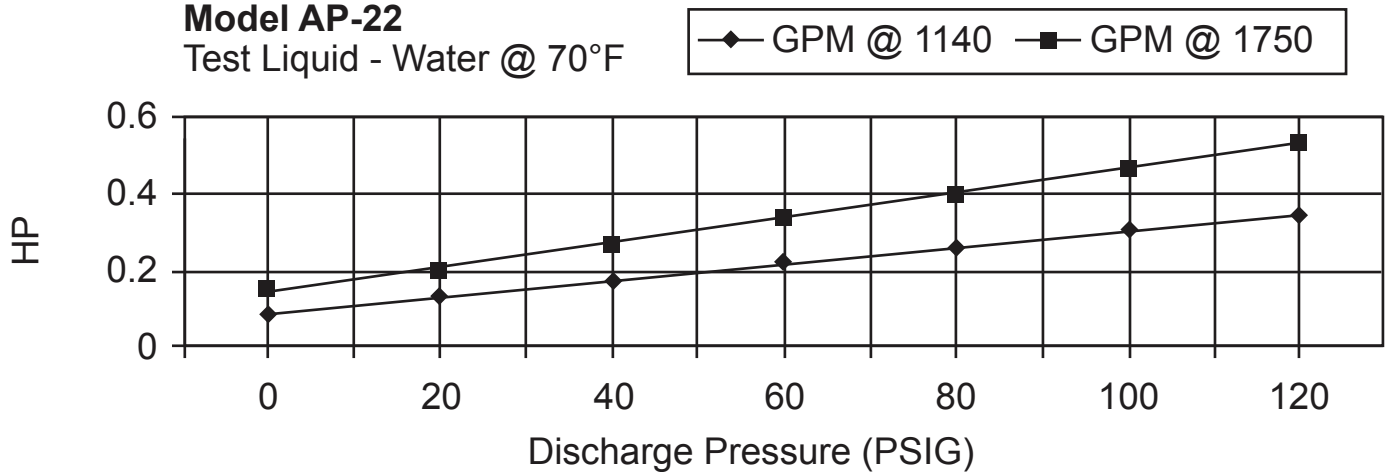
Test Liquid - Water @ 70°F



Horse Power

Model AP-22

Test Liquid - Water @ 70°F

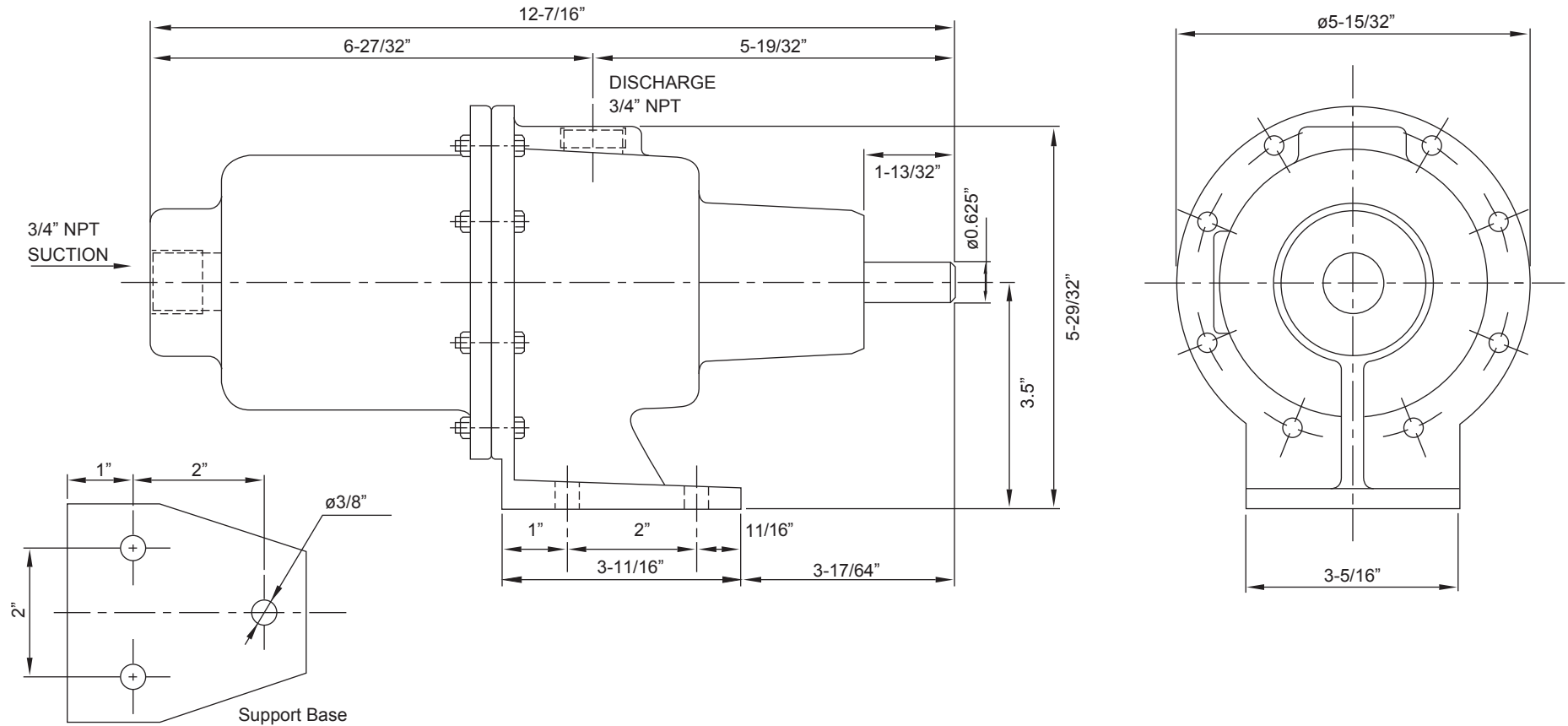




AMERICAN SERIES - AP-22

Progressive Cavity Pump

Dimensional Drawings



[BACK TO TOP](#)

Wobble Stator Pump

Net weight

≈ lbs.

20

Inches

P: 847.640.7867 F: 847.640.7855
2525 Clearbrook Drive Arlington Heights, IL 60005

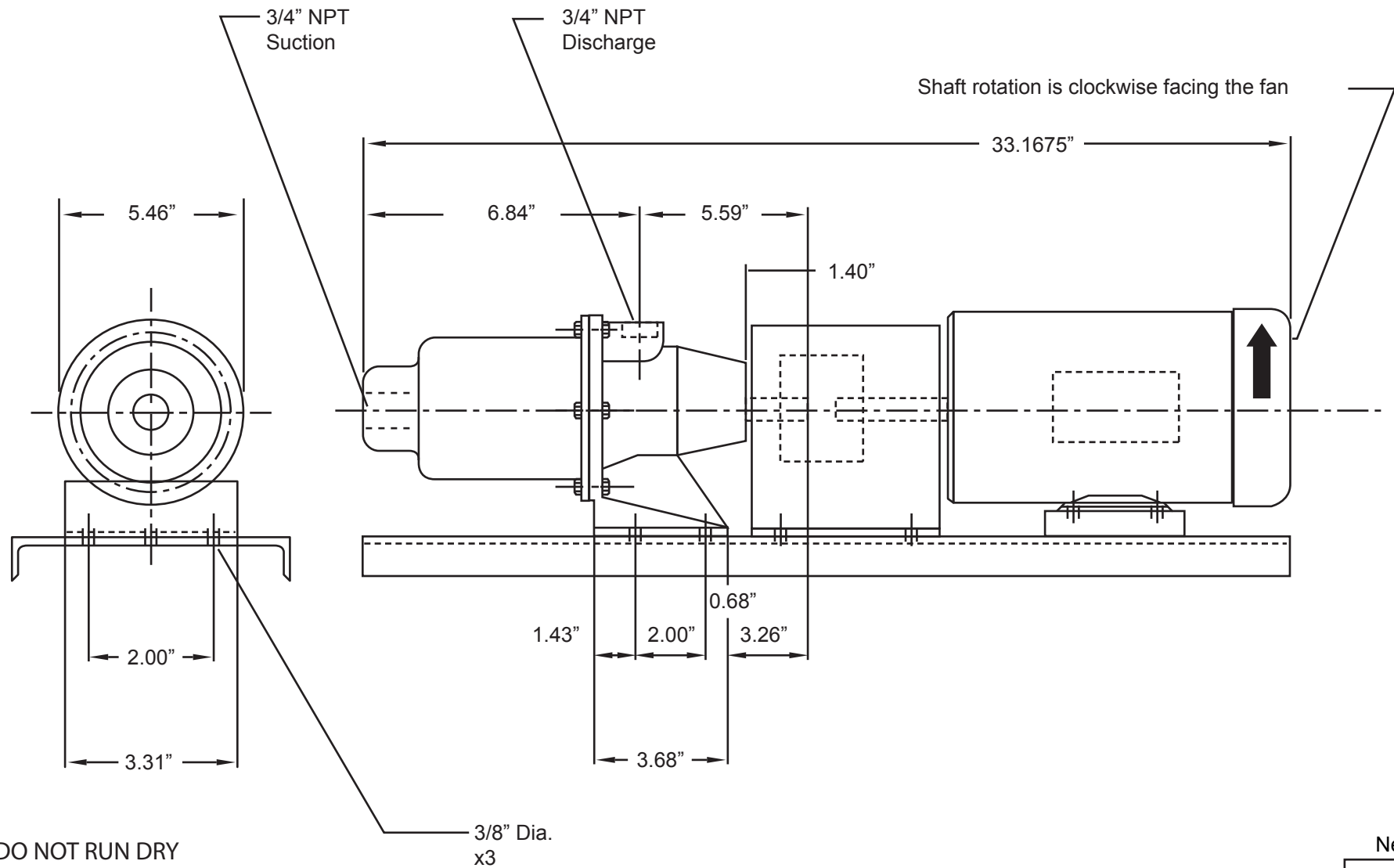
www.libertyprocess.com



AMERICAN SERIES - AP-22 COMPLETE PACKAGE

Progressive Cavity Pump

Dimensional Drawings



[BACK TO TOP](#)

Wobble Stator Pump

ALL DIMN: Inches

Net weight

≈ lbs.

20

P: 847.640.7867 F: 847.640.7855
2525 Clearbrook Drive Arlington Heights, IL 60005

www.libertyprocess.com